

SRA-8601A

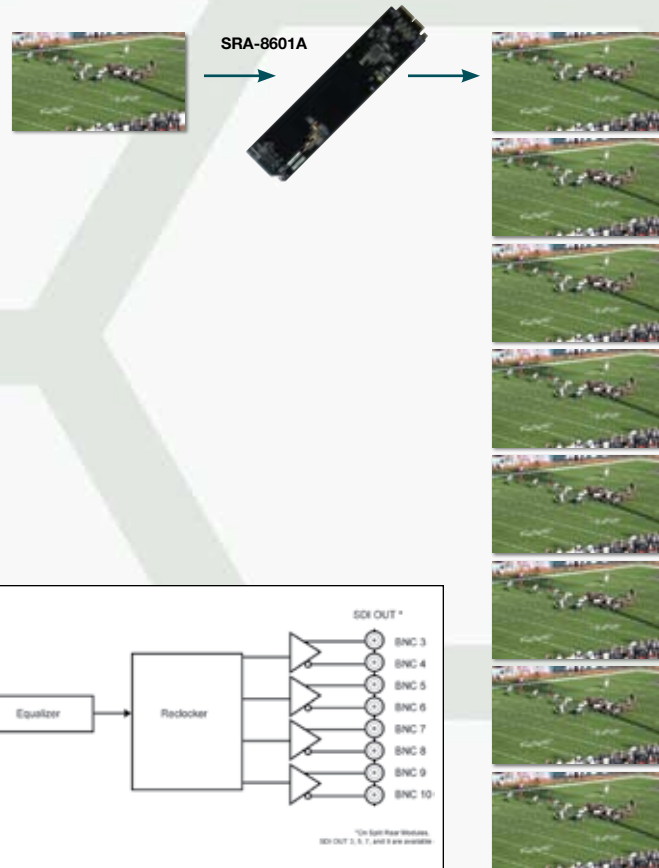
MD-SDI Reclocking Amplifiers

Highest quality 3G / HD / SD-SDI reclocking distribution amplifier.

The SRA-8601A is a Multi-Definition SDI distribution amplifier capable of equalizing and reclocking all common serial digital signals. With support for both standard-definition and high-definition signals, the SRA-8601A is the ideal universal SDI distribution amplifier.

The SRA-8601A equalizes the incoming SDI signal, compensating for greater than 300m of cable at 270Mbps, greater than 120m of cable at 1.485Gbps, and greater than 80m of cable at 2.97Gbps. The signal is then reclocked, with automatic rate detection for all popular data rates. LED indicators at the front of the card identify the presence of incoming video and the identified signal data rate.

The SRA-8601A operates as a 1x8 (one in, eight out) in the DFR-8310 series frames. In the DFR-8320 series frames, either card can be operated as the traditional 1x8, or it can operate as an independent 1x4 (one in, four out) using the split rear module configuration available in the DFR-8320 series frames. In the 1x4 configuration, the outputs are non-inverting making it an excellent ASI distribution amplifier.



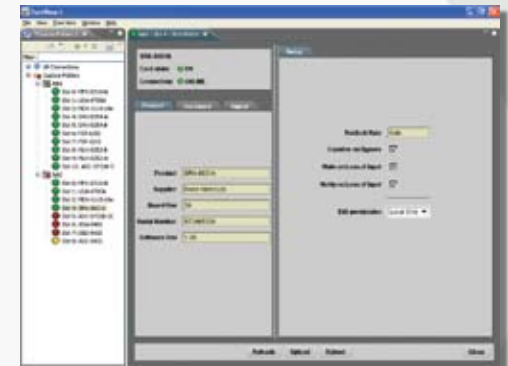
Features

- One input with 8 outputs
- Equalizes and reclocks SDI signals of 270Mbps, 1.485Gbps, and 2.97Gbps
- Equalizes greater than 300m of Belden 1694A cable at 270Mbps, greater than 120m of cable at 1.485Gbps, or greater than 80m of cable at 2.97Gbps
- Automatic detection of incoming data rate
- LED indicators for signal presence and data rate
- Excellent input and output return loss
- High density with 20 cards per frame (4 outputs) in the DFR-8320 frames using Split Rear Modules
- Fits DFR-8310 and DFR-8320 series frames
- 5-year transferable warranty
- Power: 2.9 watts



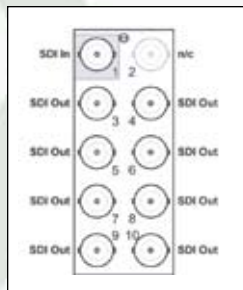
REMOTE CONTROL and MONITORING

- Network control
- Ethernet 10/100 Mbit connectivity
- System wide alarm monitoring

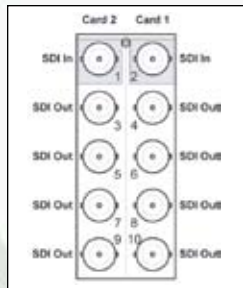


Rear Connection

1x8



1x4



Functional Block Diagram

